



### Data Report

Note: All times shown are based on UTC + 01:00 and 24-Hour clock[DD/MM/YY HH:MM:SS]  
File Created Time: 28/11/19 04:37:40

### Device Configuration

Device Name:	T Stream SU	Start time:	22/11/19 05:30:47
Device ID:	S19027097	Log Interval:	10 min
Start Mode:	Push Start	Start Delay:	0 min

### Logging Summary

Highest Temperature:	7.7 °C	First Point:	22/11/19 05:30:47
Lowest Temperature:	3.4 °C	Stop Time:	28/11/19 04:37:40
Average Temperature:	5.2 °C	Data Points:	817
MKT:	°C	Trip Length:	06d132h10m

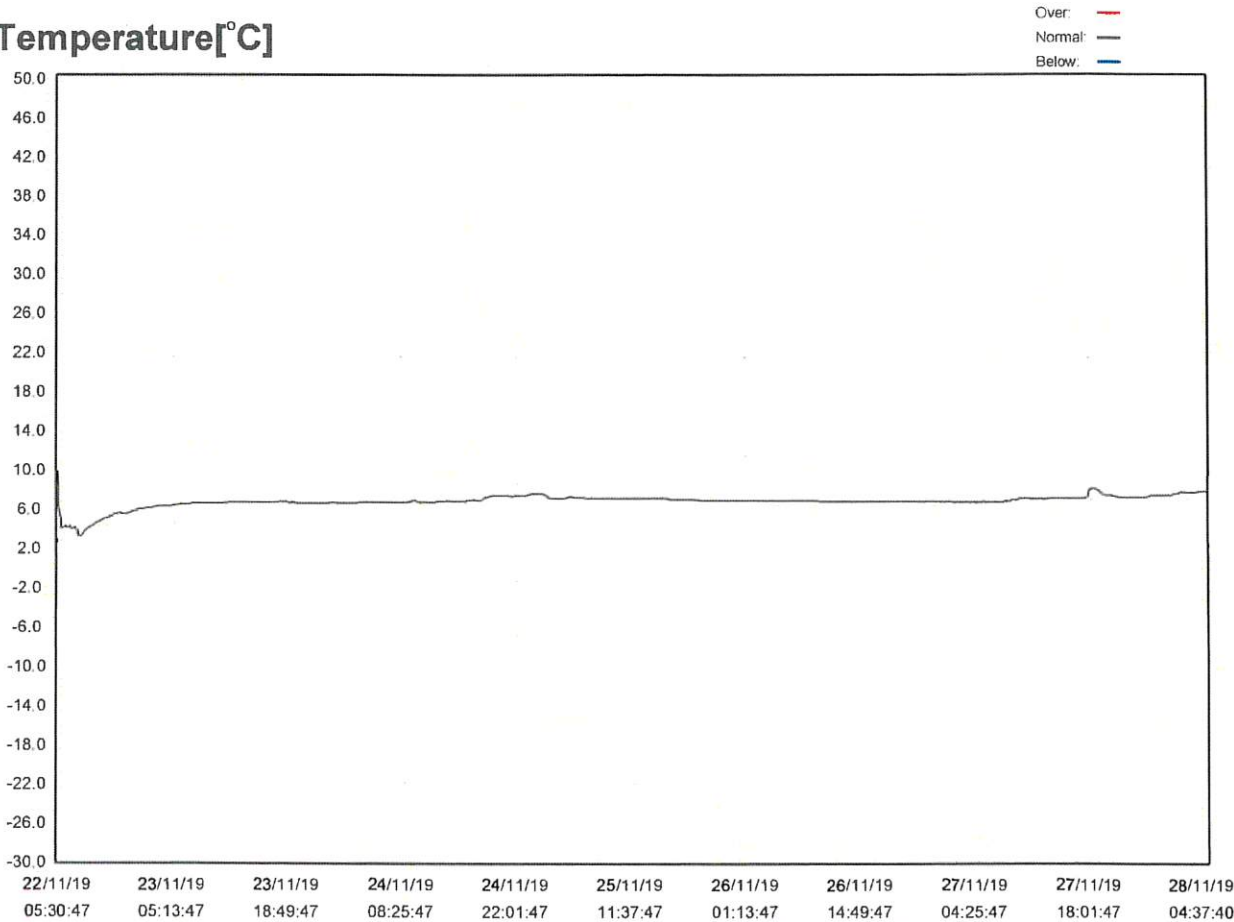
### Marked Events

N/A

### Alarm Events

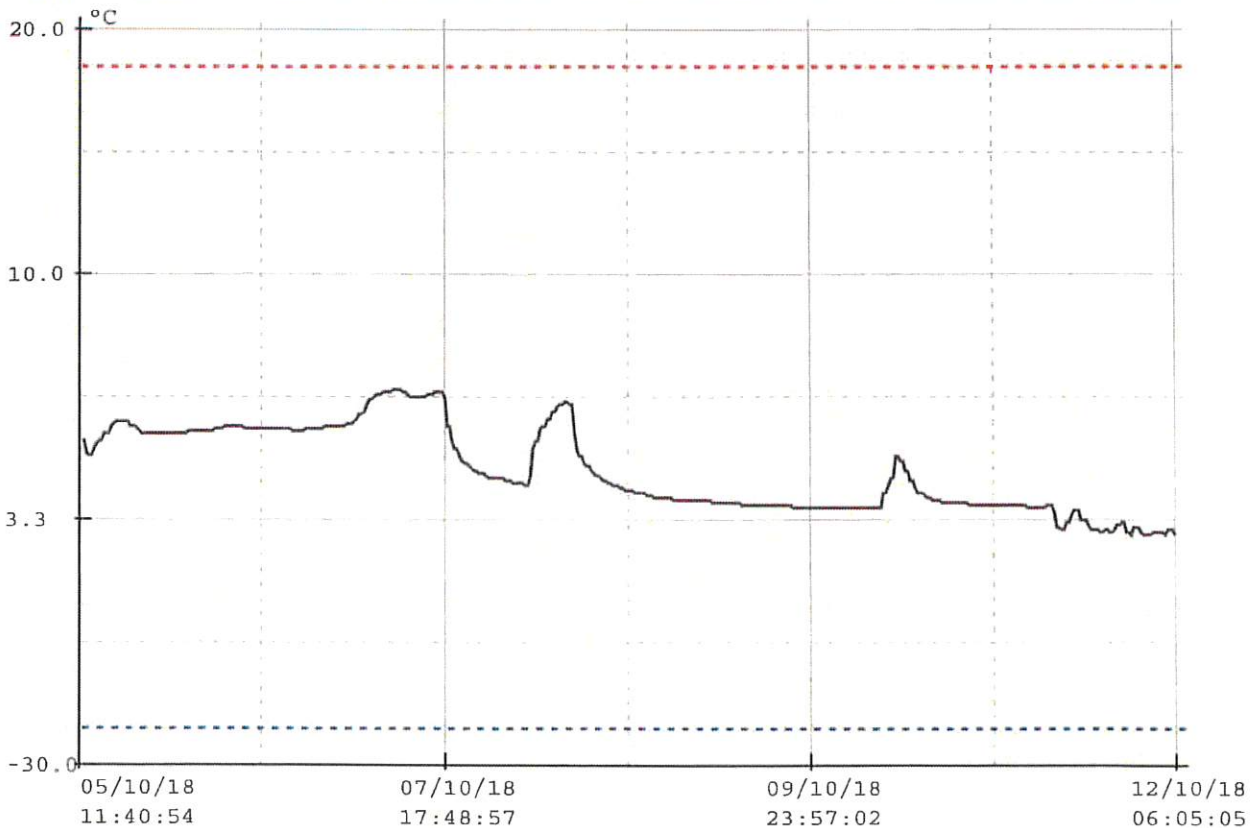
Alarms	First Triggered Time	Time of violations	Alarm Status
--------	----------------------	--------------------	--------------

### Temperature[°C]



Device specification	
Product code	MS-ST-S-8
Serial Number	MS-CI-115-2153
H/W Version	Ver_2_15
Trip Remaining	No
Description	PDF Single Use
Battery	82%
Original time zone	UTC:+5
Start	05/10/2018 11:40:54
Finish	12/10/2018 06:05:05 [B]
Start Delay	30m
Interval	1800s
Readings	325
Temperature Range	-40 to +80 °C
High High Alarm	--- °C
High Alarm	65.0 °C
Low Alarm	-25.0 °C
Low Low Alarm	--- °C

**Record**





# Data Report

File Created Date: 11-Jul-19 04:40:19

Note: All times shown are based on UTC +00:00 and 24-Hour clock [DD-MMM-YY HH:MM:SS]

## Device Information

Serial Number: S118110059-12	Log Interval: 00H 10M 00S	Temperature Type: °C
Model Number: S1C10A01000	Start Mode: Start by Button	
Version: V2.1	Start Delay: 00D 00H 00M 00S	

## Trip Information

Internal ID: 0000001  
Description: Temperature recording.

## Logging Summary

Highest Temperature: 6.3 °C	Record Mode: Stop when full	Start Time: 03-Jul-19 12:00:19
Lowest Temperature: -5.2 °C	Stop Mode: Stop by Button	Stop Time: 11-Jul-19 04:40:19
Average Temperature: 0.8 °C	Data Points: 1109	Elapsed Time: 07D 16H 40M 00S
MKT: 0.8 °C	Alarm At: N/A	

## Marked Events

N/A

Temperature[°C]

